

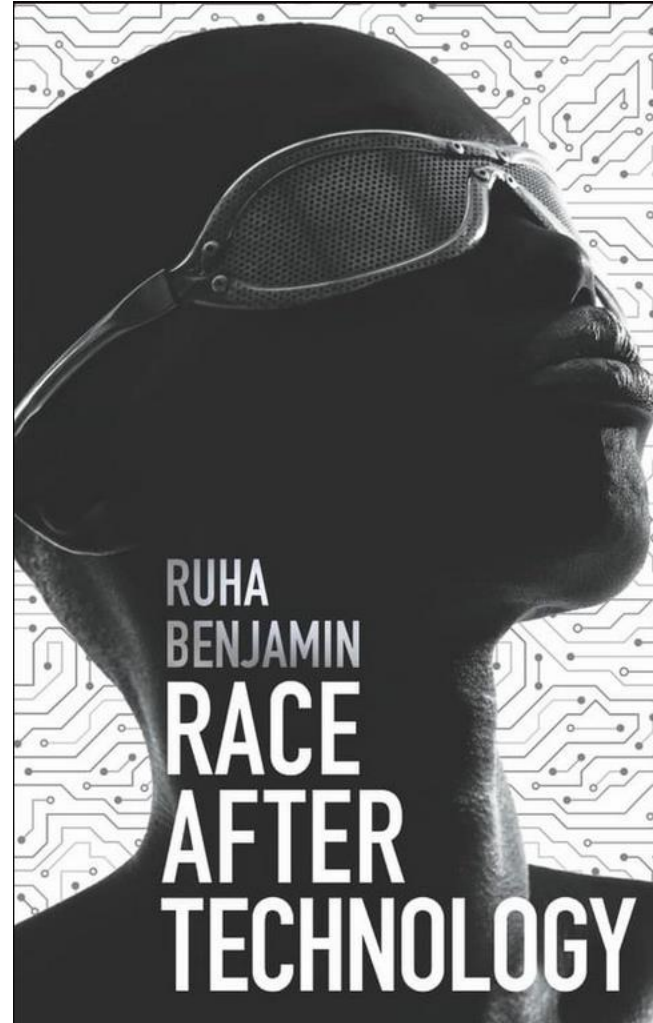
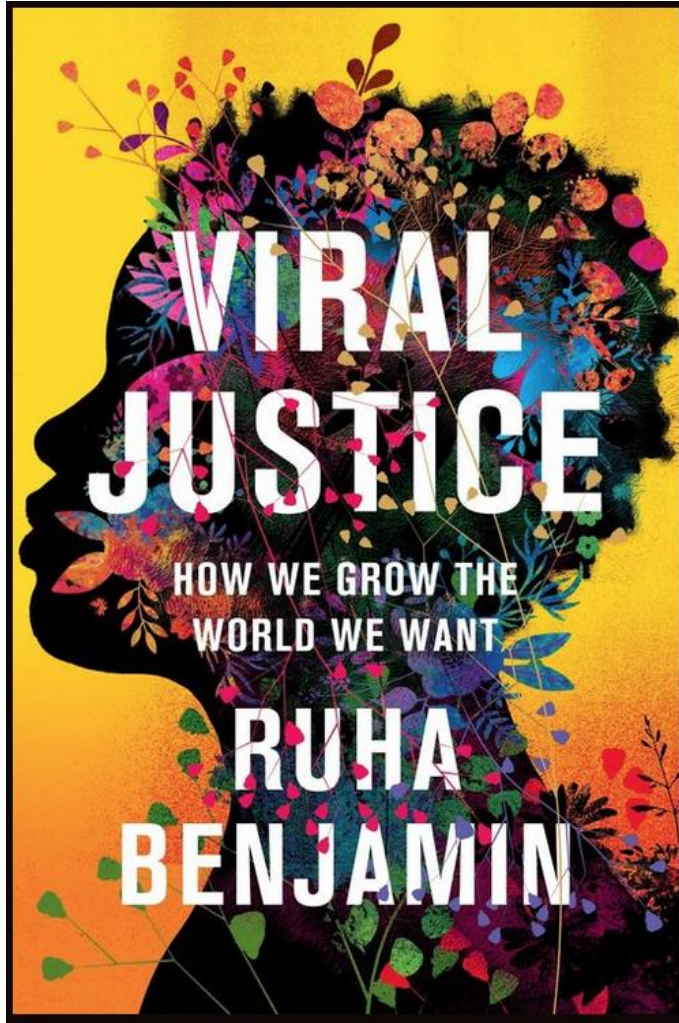
Class Discussion # 1

ML & Society

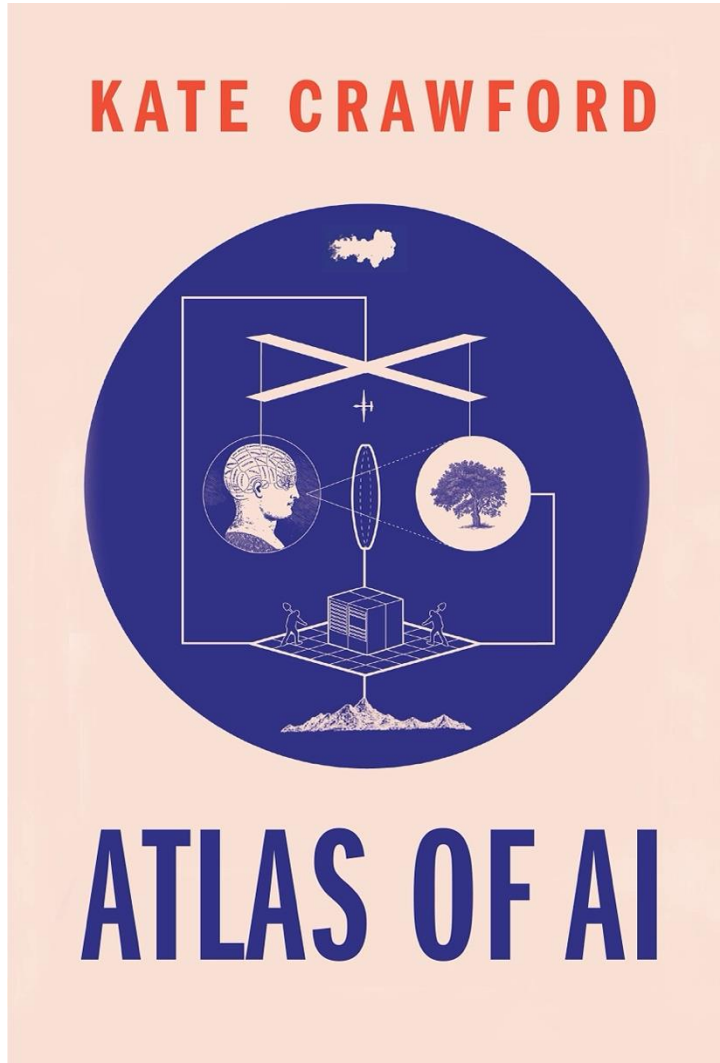
Jan 28, 2025

Pass phrase for today:

Ruha Benjamin



Readings for today



TECHNOLOGY

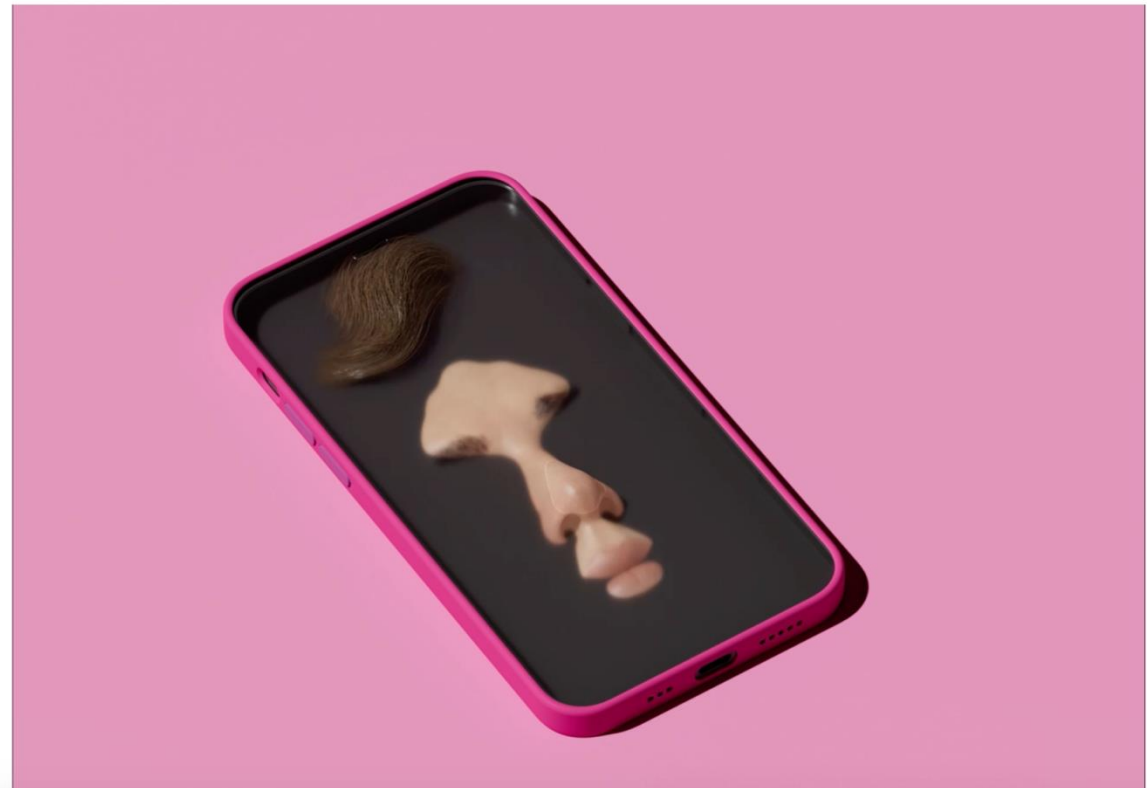
The New York Times

GIVE THE TIME

She Is in Love With ChatGPT

A 28-year-old woman with a busy social life spends hours on end talking to her A.I. boyfriend for advice and consolation. And yes, they do have sex.

[Share full article](#) [Share](#) [Bookmark](#) [835](#)



Reading our comments

Options

[View handin history](#)

 Due: January 27th 2025, 11:59 pm EST (UTC -05:00)

 Last day to hand in: January 27th 2025, 11:59 pm EST (UTC -05:00)

We are no longer accepting submissions for this assessment.

Submission Summary

Ver	File	Submission Date	Epiphanies (40.0)	In-class discussion (100.0)	Questions (30.0)	Thoughts (30.0)	Days Late (Grace Days Used)	Total Score (20)
1	View Source Download Submission	2025-01-27 07:21:11 -0500	--	--	--	--	0 days (0 days)	--

Some reminders

You should NOT have separate parts for two readings

Make sure to address BOTH readings

Synthesize BOTH readings

We will be stricter with applying the rubric going forward

Discussion setup

Discuss in groups of size 3-4

Go around groups in order of Thoughts/Questions/Epiphanies

Everyone is expected to speak: we'll keep track!

Thoughts

THOUGHTS : What did this paper/video/podcast make you think about? What were the specific parts of the paper/video/podcast that made you think that? What were the main strengths/weaknesses of the paper/video/podcast? What did you like/dislike, and why?

Questions

QUESTIONS What didn't you understand? What choices did the author make that you didn't understand/agree with? What were the aspects of the paper/video/podcast that you thought it got wrong?

Some of my thoughts based on my grading

Did Crawford have to suggest solutions instead of just stating problems?

General Q to you: Is there benefit to separating stating the problem and solving it?

Is interaction between human and AI as “real” as those between humans?

Epiphanies

EPIPHANIES Does this paper/video/podcast help you think in a new way about a problem you're working on? Is there a part of the paper/video/podcast you found particularly confusing that you'd like help understanding? How does this paper/video/podcast link to some of the other papers/videos/podcasts we have discussed or other concepts you've learned in class?